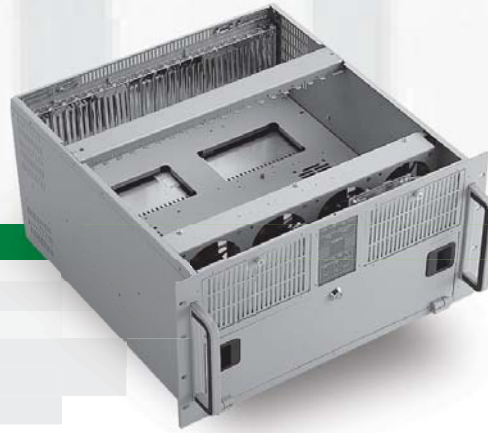


IEC-620

19" 6U Rackmount Fault Resilient Chassis for 17~20 Slots Backplane



System

Construction	Heavy-duty steel chassis
Color	Beige
Disk Drive bay	4 x 5.25" Drives (External) 4 x 3.5" Drives (2 x internal, 2 x External)
Cooling Fan	4 x 9cm/85 CFM with air filter
Control	4 x Central Power ON/OFF, separate systems
Indicator	4 x Power ON, 6 x HDD activity, 4 x cooling fan operation, temperature, 2 x power supply on-line
Front I/O	5-pin DIN keyboard connector
Temperature	0 ~ 50°C (32 ~122°F), operation
Humidity	10 ~ 95%, @25°C non-condensing
Regulation	FCC/VDE Class A, CE
Net Weight	16 kg (35.2 lb)
Gross Weight	20 kg (44 lb)

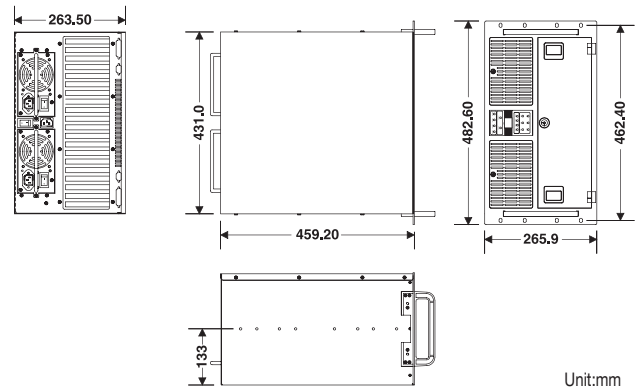
Backplane

Model Name	System	Expansion Slots
PBI-20SQ	Quad	20 x ISA
PBPI-19S	Single	13 x ISA / 2 x PICMG / 4 x PCI
PBPI-18SD	Dual	3 x ISA / 2 x PICMG(x2) / 4 x PCI
PBPI-17SQ	Quad	1 x ISA / 2 x PICMG(x4) / 2(3) x PCI
PBPX-20P17	Single	2 x PICMG / 17 x PCI

Power Supply

Model Name	Watt	Input Range	Max. Load	Min. Load
IPS-SP2-4400	400W (AT)	90~135V AC	+5V@40A	+5V@7A
		180~265V AC	+12V@16A	+12V@2.5A
		47~63Hz	-5V@1A	-12V@1A
IPS-RAH-4300F	2x300W (Redundant)	90~135V AC	+5V@25A	+5V@7A
		180~265V AC	+12V@14A	+12V@2.5A
		47~63Hz	-5V@0.5A	-12V@0.5A
IPS-RAH-4400F	2x400W (Redundant)	90~135V AC	+5V@32A	+5V@7A
		180~265V AC	+12V@24A	+12V@2.5A
		47~63Hz	-5V@1A	-12V@1A

Dimensions



Ordering Information

Model Name	w/Backplane	w/Power Supply
IEC-620-S20Q-AT400	PBI-20SQ	IPS-SP2-4400
IEC-620-C19A-AT400	PBPI-19S	IPS-SP2-4400
IEC-620-C18SD-RD400	PBPI-18SD	IPS-RAH-4400F
IEC-620-S20Q-RD400	PBI-20SQ	IPS-RAH-4400F
IEC-620-C19A-RD400	PBPI-19S	IPS-RAH-4400F