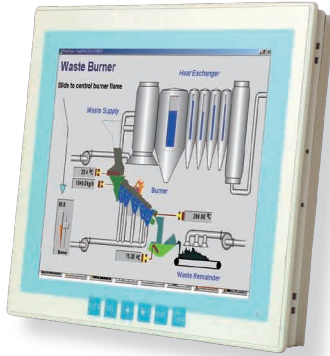




F121

Industrial 12.1" SVGA Touch Panel Monitor



Features

- 12.1" 800 x 600 SVGA Color TFT LCD Display
- Anti-reflective Touchscreen
- OSD Control Pad on Front Panel
- Super Slim and Compact Mechanical Design
- Multiple Mounting (Panel/VESA)
- Flush Front Panel NEMA4/IP65 Compliant
- Support Direct Analog RGB and DVI Input
- Support Both RS-232 and USB as Touch Interface

LCD Display

Size/Type	12.1" TFT LCD
Max. Resolution	800 x 600, SVGA
Backlight Life	50,000 hours
Luminance	370 cd/m ²
Max. Colors	262,144

Touch Screen

Type	8-wire, Analog resistive
Interface	RS-232 or USB2.0
Resolution	Continuous
Light Transparency	Above 75%
Lifespan	10 million touches at single point

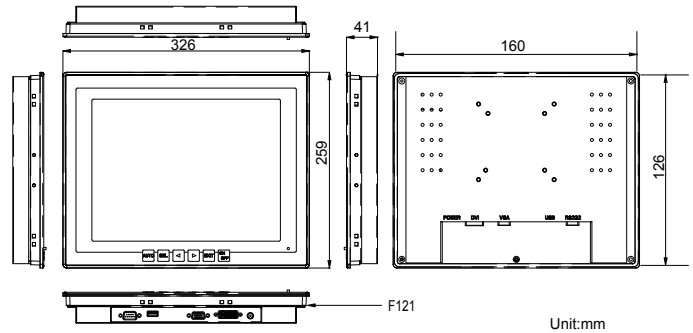
General

Button Control	OSD (On Screen Display) control pad on front panel
Enclosure	Aluminum (Front Panel), SECC coating chassis (Bezel)
Mounting	Panel, VESA-75/100, optional desktop
Power input	DC +12V
Power Consumption	12W
Video Input	1 x VGA port, 1 x DVI port

Mechanical & Environmental

Operating Temp.	0 ~ 50°C (32 ~ 122°F)
Operating Humidity	10 ~ 95% RH @40°C (non-condensing)
Ingress Protection	Front panel: NEMA4, IP65
Vibration Protection	1 Grms
Dimensions (W x D x H)	326 x 54 x 259 mm (12.86" x 2.12" x 10.2")
Weight (Net)	2.8 kg (6.2 lb)

Dimensions



Ordering Information

F121	Industrial 12.1" SVGA touch panel monitor
VMB-1260	F121 VESA mount bracket kit
ARM-934	VESA-75/100 desktop LCD monitor stand

Computer on Module

Compact Board

Slot Board

Industrial Motherboard

Wide Temperature

SBC Daughterboard Power Converter Mounting Kit

Rugged Tablet PC

Medical PC

Industrial Panel PC/Monitor

Box PC

Industrial Chassis / Backplane / Power supply